

STORM

POU Water Cooler




Crystal Mountain

STORM

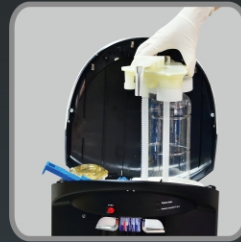
POU Water Cooler

Crystal Mountain now introduces the Storm point of use water dispenser, following the successful introduction of its counterpart, the Storm Bottom-Load water dispenser.

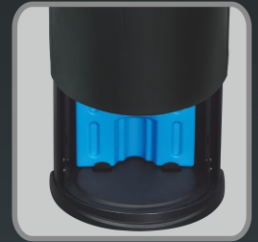
The Storm point of use water dispenser features an easy to remove reservoir system that takes less than a minute to change. The LED indicator tells you when it needs to be replaced. Servicing has never been easier. With its contemporary design, attractive finish, concealed faucets and easy maintenance, the Storm is sure to dazzle in any environment.



Concealed Water Outlet



Replaceable Reservoir System
SmartFlo™ SF-1 Water Cartridge



Unique Sliding Front
Door

Features

- High gloss finish, with stainless look and sliding front door
- Holds POU assembly
- LED light over faucet area
- SmartFlo™ SF-1 Water Cartridge – replacing is simple, quick and hygienic
- Ergonomic – higher dispense point
- Commercial grade and quality construction
- Large dispensing area for coffee pots and larger water bottles

Storm POU assembly



SmartFlo™ SF-1 Water Cartridge

100% Sanitization

Simple and Quick: In less than 45 seconds all water contact points are exchanged

Hygienic: All water contact points are exchanged



Performance and Specifications

General

An air-cooled water dispenser with a compressor-driven refrigeration system and a SmartFlo™ SF-1 Water Cartridge for easy sanitization, for use with Point-of-Use water

Cooler Cabinet

Standard colour in black. Other colours available for high volume orders

Faucet Type

Covered mechanical style faucet system with replaceable water contact components (via SmartFlo™ SF-1 Water Cartridge), and a recessed dispensing point to protect from contamination, are extra durable and add to the stylish presentation

Cold Water Tank Specifications

SmartFlo SF-1 Water Cartridge casing with 1.6 L (0.4 gal) volume
Cold water cooling capacity of 2.8 L (0.7gal)/hr based on 21°C (69.8°F) room temperature

Technician-adjustable cold control

Preset at factory to dispense water at temperatures from 4-10°C (39.2-50°F)
Adjustable cold control located at back of cabinet

Hot Water Tank

Stainless steel 304 casing with 1.1 L (0.3 gal) capacity
Hot water capacity of 5.5 L (1.45 gal)/hour based on 21°C (69.8°F) room temperature

Water Tank:

Volume: 6.3 L (1.67 gal)

Hot Water Thermostat & Heaters

Automatic thermostat set at temperature range of 76°C - 92°C (168.8°F - 197.6°F)
Manual thermostat reset in case of automatic thermostat failure
ON/OFF switch is located behind top of bottle access door

Compressor

Hermetically sealed reciprocating compressor
(220-240VAC 50Hz) (100-115VAC 60Hz)

Noise (Sound Power Level): Pump: 55dB; Compressor: 43dB(A)

Refrigerant Type: R134a

Refrigerant Charge: 220-240VAC 30g (1.1oz) , 100-115VAC 35g (1.2oz)

Dimensions and Freight Data

Model Number	Products Dimensions WxDxH (in./mm)	Box Dimensions WxDxH (in./mm)	Product Weight (lb/kg)	Product Boxed Weight (lb/kg)	Loading Qty.	
					20FT	40FT
Storm POU Water Cooler	320x340x1116mm	340x380x1165mm	14.5 kg	16.2 kg	204 units	420 units
	12.6"x13.4"x43.9"	13.4"x15.0"x45.9"	32.0 lb	35.7 lb		
Storm POU Assembly	268x297.5x470mm	479x277x187mm	2.0 kg	2.6 kg	1152 units	2400 units
	10.6"x11.7"x18.5"	18.9"x10.9"x7.4"	4.5 lb	5.7 lb		

All performances are tested in a controlled environment, certified by a third party. To learn more about these standards, please speak to your Crystal Mountain representative.





STORM

POU Water Cooler

For more than 20 years Crystal Mountain has earned the reputation for producing high quality products and superior customer service



Crystal Mountain Products Limited

North American Sales Office

11925 -145th Street
Edmonton, Alberta
Canada T5L 2H4
Tel: 1 800 878 6422
Tel: 1 780 454 4545
Fax: 1 780 454 9816
E-mail: sales@crystalcoolers.com

European Sales Office

Fence House, Fence Avenue
Macclesfield, Cheshire
United Kingdom SK10 1LT
Tel: +44(0) 1625 439 111
Fax: +44 (0) 1625 502 527
E-mail: cmeurope@crystalcoolers.com

Crystal Mountain Products Inc.

US Office / Warehouse

915 Taylor Rd, Unit 3
Gahanna OH 43230
Tel: (614) 454 1618
Fax: (614) 866 7765
E-mail: sales@crystalcoolers.com

Crystal Mountain International Limited

Hong Kong Sales Office

Room 610, Winfield Commercial Building
6-8a Prat Avenue, Tsimshatsui
Kowloon, Hong Kong
Tel: (852) 2368 1989
Fax: (852) 3017 6727
E-mail: cmasia@crystalcoolers.com

www.crystalcoolers.com

Crystal Mountain has a policy of continuous development and reserves the right to change specifications without notification.